

Saltford Community Association News

Issue No 136

October/November 2017



The SCA proudly present the highly talented and very large

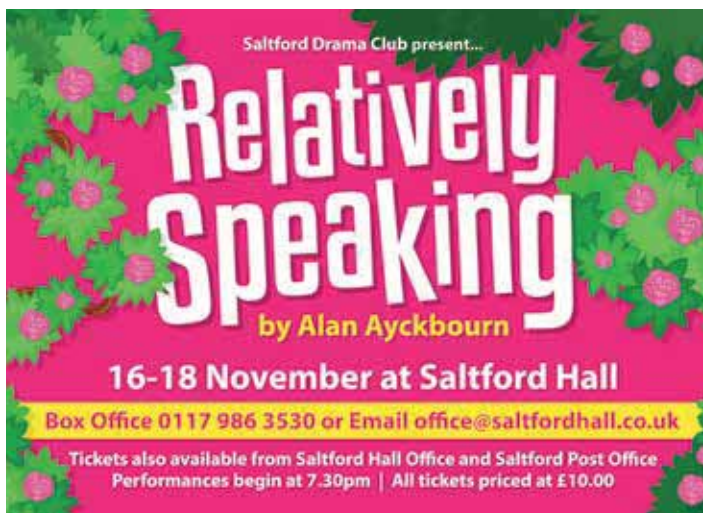
Park Lane Big Band

to entertain you on

Saturday 11th November at Saltford Hall - 7:30pm



Tickets £15 to include 2 course supper available from Saltford Post Office, Saltford Hall (am only) or via events@saltfordhall.co.uk



COPY DEADLINE FOR DECEMBER/JANUARY ISSUE OF SCAN:

1st November 2017

Copy sent by email to scan@saltfordhall.co.uk will be very welcome.

www.saltfordhall.co.uk

**Bristol's Largest
Indoor Window and
Doors Showroom**

the difference is . . .
CRYSTAL CLEAR BRISTOL



**Servicing Bristol
for over 3 decades**

**Family owned
and run**



For Stunning Heritage Windows and Doors
Visit Crystal Clear



VISIT OUR IMPRESSIVE INDOOR SHOWROOM

To find out more, please call us on:

0117 911 0471

or visit **www.crystalclearbristol.co.uk**

 www.facebook.com/crystalclearbristol

24 Emery Road, Brislington, Bristol BS4 5PF

Saltford Community Association - Contacts

SCA is a Registered Charity—Number 1162948

Hon Chair SCA	John Davies	01225 344976
Hon Vice Chair SCA	Peter Dando	01225 873917
Hon Treasurer SCA	Chris Essex	01225 873878
Hon Secretary SCA	Sheila Bateman	01225 873474
SCAN Distribution	Jenny Herring	01225 874631
SCAN Editor	e-mail: scan@saltfordhall.co.uk	07770 750327
Hall Manager	Christopher Pope	01225 874081
e-mail:	hall.manager@saltfordhall.co.uk	

List of Sectional Organisation Contacts

Saltford Drama Club	Liz James	01179 863530
Saltford Short Mat Bowls	Joan Hamblin	01225 872389
Saltford Village Choir	Julie Latham	01225 872336
Saltford Panto Club	Louise Smee	07889 345086
SCA Musical Productions [SCAMP]	Corrine-Anne Richards	0117 986 0930

The opinions, advice, products and services offered herein are the sole responsibility of the contributors. Whilst all reasonable care has been taken to ensure the accuracy of the publication, the publishers cannot accept responsibility for any errors or omissions. SCAN takes no responsibility for the content of any images, screenshots or supporting graphics/visual data.

SALTFORD HALL BOOKING OFFICE

01225 874081 E-mail: office@saltfordhall.co.uk www.saltfordhall.co.uk



Saltford Hall

Saturday 14 October 2017

Starting at 7.30pm

Teams of up to 6

50/50 split of profits between SCA and Saltford Tennis Club

Tickets £6 per head

to include a ham and cheese ploughmans.

available at Saltford Hall Booking Office (am only)

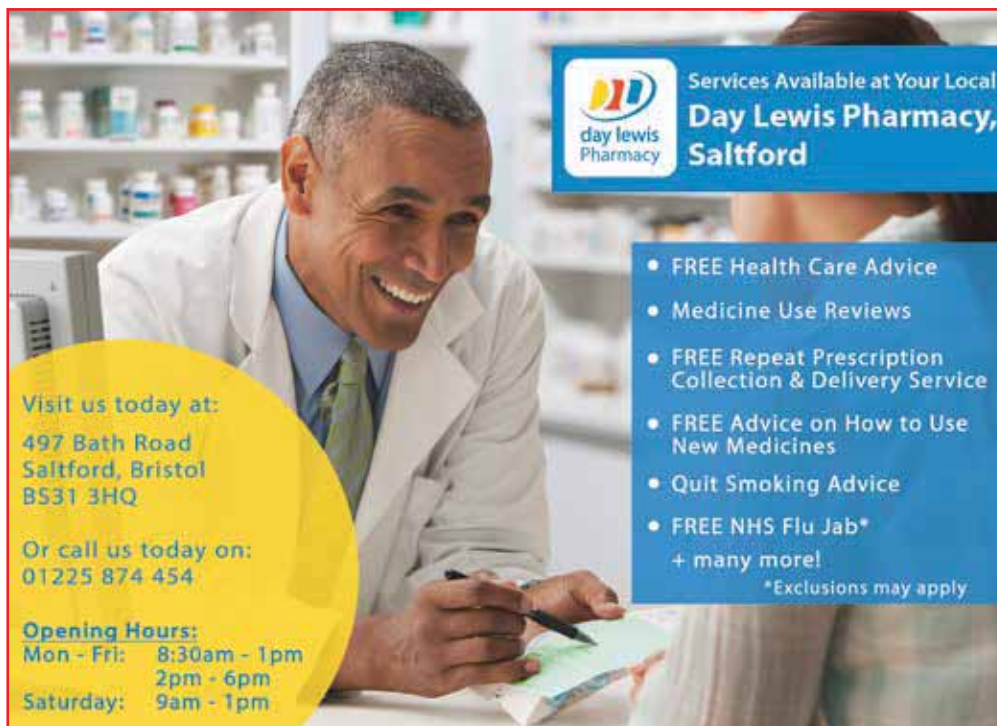
Saltford Post Office or you can request tickets via

events@saltfordhall.co.uk

MONTHLY ACTIVITIES AT SALTORD HALL

Please note:- Dates, times and venues may change. Please check with the contact named elsewhere in this newsletter, and note that these are booking times - event times may differ.

First Monday (usually)	10.00am	Beading Course	Wansdyke
Second Monday	7.30pm	Saltford Quilters	Somerset
Second Monday	7.30pm	Lions Club of Keynsham	Kelston
Third Monday	10.00am	Saltford Morning WI	Avon
Last Monday	10.00am	Craft & Natter Club	Kelston
First Tuesday	9.30am	Saltford Ladies Gardening Club	Wansdyke
First Tuesday	2.00pm	Saltford Afternoon WI	Wansdyke
Second Tuesday	7.30pm	Saltford Women's Institute	Avon
Fourth Tuesday	2.15pm	Saltford Floral Club	Hall
Second Thursday	9.45am	Ladies Together	Kelston
Second Thursday	8.00pm	Book Club	Somerset
Second Friday	7.30pm	Keynsham & Saltford Wine Circle	Avon
One Saturday per month	10.00am	Farandole Dance Club Please contact June Simpson for exact dates on 01225 872586	Wansdyke
Fourth Saturday	2.30pm	Historical Model Railway Society	Wansdyke



Visit us today at:
497 Bath Road
Saltford, Bristol
BS31 3HQ

Or call us today on:
01225 874 454

Opening Hours:
Mon - Fri: 8:30am - 1pm
2pm - 6pm
Saturday: 9am - 1pm

Services Available at Your Local Day Lewis Pharmacy, Saltford

- FREE Health Care Advice
- Medicine Use Reviews
- FREE Repeat Prescription Collection & Delivery Service
- FREE Advice on How to Use New Medicines
- Quit Smoking Advice
- FREE NHS Flu Jab*
- + many more!

*Exclusions may apply



Take your child on a musical journey with our lively, fun classes full of singing, movement and percussion.

Fabulous fun for babies and children from birth until school.

SALTFORD HALL

Monday & Thursday mornings in the Kelston Room

Please contact Lisa Towler on: 07870 248725 for more details

E-mail: musicwithmummy.lisa@gmail.com

Facebook: Music with Mummy Keynsham and Saltford

Paul Wilshere Carpets

Carpet, Vinyl & Laminate supplied and fitted.

Refits & alternations welcome.

View samples in your home.

Free no obligation quotations.

Over 35 years experience.

Friendly and reliable service.

Based in Saltford.

Tel: 07714204689
paulwilshere@live.co.uk

PERMISSIVE FOOTPATH DONATION APPEAL

We are just £100 short of our annual target of £3000

If you walk, run or ride a horse on any part of the 4.5km of permissive paths to the west and south of Saltford then we strongly encouraged you to support this appeal if you have not already done so in the last year.

An average of £25, plus Gift Aid, is a small price to pay for continuing to enjoy over 4.5km of footpaths. Any donations received in excess of the target will be carried over to help fund the following year.

Without regular, annual donations from residents to cover the costs, the SCA will not be able to keep these paths (marked in green) open and it is highly likely that once closed they will remain closed for ever as the land will be planted with crops.

If you regularly use any of these paths and wish to donate, then please either pick up a donation envelope from Saltford Hall or go to our website where a specific section can be found at

http://www.saltfordhall.co.uk/Permissive_paths.html This page provides a link to a downloadable Gift Aid form and details of how to make a donation including via Paypal. It also allows you to specifically indicate how you wish your donation to be used. **We have till the end of October 2017 to reach this target and keep the paths open for another year.**



Selected Events in October 2017

Day	Date	Organisation	Type of Event	Room Booked	Start Time
Tuesday	3 rd October	Saltford Parish Council	Council	Avon	19.00
Sunday	8 th October	SCA – Afternoon Tea		Avon	14.00
Monday	9 th October	SCA – Computer Cafe		Somerset	10.00
Monday	9 th October	SCA – Benefit Advice		Avon	10.00
Wednesday	11 th October	Bath Guild of Embroiderers	Meeting	Wansdyke	10.00
Friday	13 th October	Orchestra Workshop		Hall	09.15
Saturday	14 th October	Farandole Dance Club	Dance Practice	Hall	10.00
Saturday	14 th October	SCA & Saltford Tennis Club	Quiz	Hall	19.30
Tuesday	17 th October	Saltford Parish Council	Planning	Avon	19.00
Wednesday	18 th October	Saltford Parish Council	Meeting	Avon	19.00
Friday	20 th October	SCA – Community Cinema	'The Viceroy House'	Hall	19.30
Saturday	21 st October	Saltford Walkers	Social Evening	Avon	18.30
Sunday	22 nd October	SCA - Fundraiser	Grand Flea Market	Hall	10.00
Saturday	28 th October	Keynsham & District Tangent Club	Charity Quiz	Hall	18.30
Sunday	29 th October	Mark Thomas Antiques	Antiques Fair	Hall	07.30

PLEASE NOTE: DATES, TIMES AND VENUES MAY CHANGE. PLEASE CHECK WITH THE CONTACT NAMED ELSEWHERE IN THIS EDITION AND NOTE THAT THESE ARE BOOKING TIMES – EVENT TIMES MAY DIFFER

Selected Events in November 2017

Day	Date	Organisation	Type of Event	Room Booked	Start Time
Wednesday	1 st November	Bath Guild of Embroiderers	Meeting	Wansdyke	10.00
Thursday	2 nd November	SCA – Management Committee	Meeting	Somerset	18.30
Friday	3 rd November	N.E. Somerset Conservatives	MPs Surgery	Avon	10.30
Friday	3 rd November	SCA - Talks	Saltford History and Saltford Station	Avon	19.30
Sunday	5 th November	SCA – Afternoon Tea		Avon	14.00
Tuesday	7 th November	Saltford Parish Council	Council	Avon	19.00
Friday	10 th November	Orchestra Workshop		Hall	09.15
Saturday	11 th November	SCA – Fundraiser	'Park Lane Big Band'	Hall	19.30
Monday	13 th November	SCA – Computer Cafe		Somerset	10.00
Monday	13 th November	SCA – Benefit Advice		Avon	10.00
Thursday to Saturday	16 th to 18 th November	Saltford Drama Club	Performance	Hall	18.30
Saturday	18 th November	Farandole Dance Club	Dance Practice	Wansdyke	10.00
Tuesday	21 st November	Bath Guild of Embroiderers	Meeting	Wansdyke	10.00
Tuesday	21 st November	Saltford Parish Council	Planning	Avon	19.00
Friday	24 th November	SCA – Community Cinema	'Their Finest'	Hall	18.00
Saturday	25 th November	Wrestling Event		Hall	18.00
Tuesday	28 th November	SCA - Talk	Chris Green	Avon	19.30

REGULAR WEEKLY ACTIVITIES AT SALTORD HALL

Please note: Dates, times and venues may change. Please check with the contact named elsewhere in this newsletter and note that these are Booking Times – event times may differ

Mondays	9.45am	Jazzercise Class	Hall
	10.00am	Music with Mummy	Kelston
	1.30pm	Saltford Short Mat Bowls	Hall
	2.00pm	Whist Club	Avon
	4.40pm	Dance Factory	Hall
	7.00pm	Saltford Scrabble Club	Kelston
(wef 9/10/17)	7.30pm	Saltford Drama Club	Avon
(in season)	8.00pm	Saltford Badminton	Hall
Tuesday	9.30am & 1.15pm	The Art Group	Kelston
	10.00am	Hatha Yoga	Avon
	10.00am	Tuesday Morning Badminton	Hall
	6.15pm	Hatha Yoga	Somerset
	7.00pm	Saltford Parish Council	Avon
	7.30pm	Avon Badminton	Hall
(1st & 3rd only)	7.30pm	Saltford Village Choir	Wansdyke
	9.45am	Wednesday Morning Badminton Group	Hall
	1.30pm	Saltford Short Mat Bowls	Hall
	4.00pm	Keyford Dancing School	Somerset
Wednesday	7.30pm	Saltford Sequence & Old Time Dance Club	Hall
	9.45am	Jazzercise Class	Hall
	9.45am	Music with Mummy	Kelston
	2.00pm	Painting for Pleasure	Avon
Thursdays	5.45pm	Hatha Yoga Class	Wansdyke
	6.30pm	Pilates Class	Hall
	6.15 & 8.00pm	Hatha Yoga Class	Wansdyke
	7.30pm	Keynsham AA Group	Kelston
	9.00am	Vitality Pilates	Kelston
	10.30am	Saltford Wind Chamber Group	Somerset
Fridays	10.00am	Hatha Yoga	Wansdyke
	1.30pm	Saltford Short Mat Bowls	Hall

SCA is on Facebook

<http://www.facebook.com/pages/Saltford-Community-Association/186494898072876>

Grand Flea Market

Sunday 22nd October

Saltford Hall

10.00am – 1.00pm

Cafe with Bacon Butties



ANYTHING GOES!

All proceeds to the Saltford Community Association

Contact Angela on 01179 831 314 for a table

SALTFORD COMMUNITY ASSOCIATION

Forthcoming Fundraising Events in 2017

September	22	Charity Race Night – Saltford Sports Club	7.30pm
	24	Antiques Fair with Community Café	10 – 3pm
	30	World Textile Day West with Community Café	10 – 5pm
October	8	Sunday Afternoon Tea	2 - 4.00pm
	9	Computer Cafe	10 – 12am
	10	Benefit Help Clinic	10 – 12am
	14	Fundraising Quiz – SCA & Tennis Club	7.30pm
	20	Community Cinema – The Viceroy House	7.30pm
	22	Grand Flea Market with Community Café	10 – 1pm
	28	Keynsham & District Tangent Quiz for Age UK	7.30pm
	29	Antiques Fair with Community Café	10 – 3pm
November	3	Evening Talks – Saltford History	7.30pm
	5	Sunday Afternoon Tea	2 - 4.00pm
	11	Park Lane Big Band Night	7.30pm
	13	Computer Café	10 – 12am
	14	Benefit Help Clinic	10 – 12am
	16-18	Saltford Drama Club Production	7.30pm
	24	Community Cinema – Their Finest	7.30pm
	25	Wrestling Night	7.30pm
	28	Evening Talk – Chris Green, stories from Helmand	7.30pm
December	2	Christmas Market with Community Café	10 – 2pm
	2	Keynsham Walking Football Dance	7.30pm
	3	Sunday Afternoon Tea	2 - 4.00pm
	7	Lighting the Christmas Tree	7.00pm
	9	Saltford Village Choir Concert	7.30pm
	12	Benefit Help Clinic	10 – 12am
	17	Antiques Fair with Community Café	10 – 3pm

**For more information please e-mail
events@saltfordhall.co.uk or ring the Booking Office on 01225 874081**

SECTIONAL ORGANISATIONS

SALTFORD DRAMA CLUB

Saltford Drama Club's next production is the hilarious comedy "Relatively Speaking" by British playwright Alan Ayckbourn. This was Alan Ayckbourn's first West End hit and one which turned him into a household name.

The story follows Greg and Ginny, a young couple who have only been together a month but this doesn't stop Greg from knowing she's the girl for him. So much so that when she tells him she is visiting her parents, he decides this is the time to ask her father for his daughters' hand. Discovering a scribbled address, he follows her to Buckinghamshire where he finds Philip and Sheila enjoying a peaceful Sunday morning breakfast in the garden, but the only thing is – they're not Ginny's parents!

This obviously leads to misunderstanding and confusion and the situation becomes increasingly both complicated and hilarious.

Alan Ayckbourn is easily as funny as any of the classic comedy writers and in this early piece showed how prolonged misunderstanding can become a source of painful truth.

Relatively Speaking, directed by Corinne-anne Richards is being performed at Saltford Hall from Thursday 16th – Saturday 18th November 2017.

Tickets are available from saltfordevents@hotmail.co.uk or 0117 986 3530.

SALTFORD SHORT MAT BOWLS

On Saturday last two teams from Saltford competed in the Avon County Open Fours Championship. The standard of play was, mostly, high with one team fielding four Welsh national players. One of the Saltford teams played against another fielding two English national players. You may have guessed from this that Saltford didn't progress to the Final of either Cup or Plate! However, keeping up with modern technology, the final was live streamed to Facebook! Two of our members have been selected to play the Inter-county match against Herefordshire later this month.

We must be doing something right!

This afternoon we began our Bristol & District

League programme. Our teams (Saltford Scamps & Saltford Scallywags) each have twenty matches to play on a home and away basis. This first match was a friendly affair – Scamps v Scallywags (our last match is the reverse) Scamps were the 'host' team and had three new players in their squad (who competed very well). Score on Mat 1 Scamps 12 Scallywags 23 and on Mat 2 Scamps 12 Scallywags 7. Overall totals gave Scamps 2 points and Scallywags 3. Afterwards we enjoyed tea, biscuits and lively conversation.



These were the contestants. – still smiling. 9th September 2017

Why not come and try a new sport? No equipment needed to start. Bring a friend or come on your own and make a new friend.

We meet on Monday, Wednesday & Friday afternoons 13.30 'til 16.30 (and have qualified coaches to help)

More information from Joan Hamblin (our Secretary) 01225 872389

SALTFORD VILLAGE CHOIR

We have just started rehearsals for our Christmas Concert called "Sounds of Christmas" which will take place on

Saturday 9th December.

We would like to welcome some more people to the choir. We meet on Tuesday evenings in the Wansdyke room at 7.30pm. There is no audition and you do not have to be able to read music. Our reasonable subscription pays for our sheet music and our musical director. Being a sectional member of the SCA means our room hire is gratis.

Please come along and try us out. If more details are needed ring Julie on 01225 872336

AFFILIATED ORGANISATIONS

K&S AVON WILDLIFE TRUST

Friday 13 October, 7.30pm at the Baptist Church Hall, High Street, Keynsham.

The Horseshoe Bats of Woodchester Mansion, illustrated talk by Ray Canham and Graeme McLaren.

Free Parking in Ashton Way Car Park. Entrance £2.50 children under 16 £1.

Gift and Book Stalls and Bird food for sale. Coffee break. All welcome. Local contact: Cynthia 874259 for a lift.

Friday 10 November 7.30pm at the Baptist Church Hall, High St. Keynsham.

Ian Clemmett, Head Ranger of the National Trust Somerset Coast and Countryside will give an illustrated talk.

Free Parking in Ashton Way Car Park. Entrance £2.50 children under 16 £1.

Christmas Gift and Book Stalls and Bird food for sale. Coffee break. All Welcome.

Contact Cynthia if you wish to have a lift in. (874259)

BATH GUILD OF EMBROIDERERS

We have two final courses planned for 2017.

They are a Daisy Book Wrap with Angie Hughes and Pulled Work with Monica Jarrett Further details will be supplied when you book.

These courses run from 10 am to 4 pm and cost £25 each for members.

Non members are welcome for the cost of £35 per course which includes tuition fees and tea/coffee etc. You will need to bring your own packed lunch.

People with all levels of skill or none are welcome.

We also have our AGM in November where we will be publishing our exciting programme of courses for 2018 and collecting annual membership fees of £20 per person.

Please see our website for more details; Bathguildembroiderers.btck.co.uk

SALTFORD MORNING WI

A new WI was formed on Monday 21st August.

The launch took place in the Wansdyke Room and was very well attended with 29 ladies becoming members. The President, Margaret Grindrod, Secretary, Diana Wiggins and Treasurer, Lynda Coles along with the other members of the newly formed committee, Pauline Reed, Jane Holmes and Delia Boulton were introduced by Maureen Crew, the WI advisor for Avon. Although most of the meeting centred around what a WI can do and what we hope to achieve, there was a Ukulele Band from Lansdown WI to entertain us and provide some light relief from filling in forms. Future events and trips were also discussed.

Future meetings will be on the 3rd Monday of the month in the Avon Room between 10-12am. Anyone wishing to join us should come along to the next meeting or contact either Margaret on 01225 872707, Lynda on 01179 831288 or Diana at secretarysaltmonwi@virginmedia.com .

We would love to see you there.

KEYNSHAM & SALTFORD HISTORY SOC

If you are interested in history, especially local history, now is a good time to join the Society. Our new programme of evening talks starts this month, with meetings at St. Dunstan's Catholic Church Hall, Bristol Road, Keynsham. As always, our Programme Secretary has found a wide variety of topics for the season, with the first two being:

Monday 16th October

"Broadmead before the Shops" by Mike Hooper

Monday 20th November

"Concorde – Queen of the Skies" by Chris Bigg

Later, we have speakers on Keynsham Abbey, Secret Underground Cities (ie under Box Hill/Corsham) and Lundy Island, amongst others.

All meetings start at 7.30 pm. Visitors are welcome (£4.00/head), but if you join then admission is free.

Members can also join in our visits to local places of interest and the coach trips to places further afield. If you enjoy historical research then we have a group currently researching the history of the area since 1945.

To join the Society visit our website www.key-salthist.org.uk and download a membership form.

KEYNSHAM & SALTFRD WINE CIRCLE

We had a tasting of six ciders at our July Meeting. Aspoll Premier Cru from Suffolk; Sheppy's Falstaff from Somerset; Chaplin and Cork's Vintage Cider from Somerset; Curious Apple with Rubens from Tenterden in Kent; Dunkertons Organic Black Fox from Herefordshire and Kopparberg Strawberry/Lime Cider from Sweden. In between the tastings, Alan Dummott our Chairman, related some of the history and gave his personal reminiscences of The Isle of Sheppey, where he and his family were born.

Our Summer Dance was held in August at which we enjoyed a supper together with the music of Sharon Wilshire. There were visitors from Bath, Nailsea, Timsbury and Warmley Wine Circles and the Dance Groups of Keynsham and Paulton were present also. Everyone enjoyed the dance and thanks are due to the Members and Committee of the Wine Circle for their hard work in setting up the Hall, preparing the food and for their donations to the raffle, that all contributed to the success of the evening.

A Charity Bottle Auction and American supper was held in September and the British Heart Foundation was the recipient of this year's proceeds. There was also a rose wine competition this evening. The result was 1st: Angie Dummott; 2nd: Betty Haynes and 3rd: Alf Ashton

A floral bouquet was presented to Jim and Betty Haynes on the occasion of their 60th Wedding Anniversary.

Next month is our Annual Wine Competition and a Commercial Wine tasting presented by our friend Vernon Groves. In November there will be a talk by Tom Peryer O.B.E

If anyone is interested in joining or would like more details regarding the Wine Circle, please contact Alan Dummott on 01225 873493.

KEYNSHAM & SALTFRD PROBUS CLUB

"Following the excitements of the Club holiday in Ironbridge, the visit to the Royal Mint, the trip to

the theatre in Newbury and, of course, the Saltford Village Festival (all as reported in the August/September issue of SCAN), the Keynsham & Saltford Probus Club has relaxed a little over the summer months!

At the July lunch meeting, members listened with great attention to Peter Malpass as he spoke about Bristol's Floating Harbour. He explained that it was constructed because of increasing rivalry with Liverpool and to make port working more efficient and also safer in a non-tidal harbour. Digging began in 1804 (it's a myth that French prisoners-of-war were involved), and the project took five years to complete. Inevitably, although no new quays were built, there were cost over-runs (from an initial £18,000 to £118,000!), and the harbour dues were correspondingly high. There were also problems with silting, which Brunel alleviated in 1832. Brunel also built two ships (SS Great Western and SS Great Britain) in the harbour, though the SS Great Britain was too broad to exit the lock gates, which had to be altered so that she could leave on a high spring tide.

For the August meeting, the speaker was Roger Francis, F.I.A.T, who described his 'Lifetime of working with Animals', which began with a love of birds and continued through to his becoming an international authority on animals and their welfare. In addition to his fascinating and informative talk, which generated a lot of interesting and probing questions, Roger amazed members with his wooden carvings of birds.

The previous day, members once again visited the Watermill in Newbury, this time for a production of the musical 'A Little Night Music', by Stephen Sondheim and Hugh Wheeler, which was greatly enjoyed by all.

The Keynsham and Saltford Probus Club meets at Keynsham Rugby Club for lunch and a talk by an invited speaker, usually on the fourth Friday in the month. Coffee meetings are held on the second Friday, at the same venue. Prospective members are invited to contact the **Membership Secretary, Owen Cole, on 0117 986 4312."**

SALTORD HOUSE SKITTLES LEAGUE

It has been a quiet time since the season ended in April. Although a few members did keep their hands in by having a "roll-up" at The Sports Club every Monday whilst the League rested.

However, the new season started on Monday 18th September at 8.30 p.m. with the Ratpack playing the Clubbies.

New members are always welcome to join the Skittles League that plays on Monday to Thursday at the Saltford Sports Club. **For more information please phone the Secretary, Alan Dummott on 01225 873493.**

SALTORD BRASS MILL

Saltford Brass Mill has had a busy summer. Since the Saltford Festival, as well as our regular open days on the second and fourth Saturdays each month, we have welcomed 7 or 8 groups from across our region, from colleges to history societies and organised walkers to business groups with more to come. We celebrated Heritage Open days in September and in October we will be open on additional Saturdays and Sundays (the 21st, 22nd, 28th and 29th of October) for Museums Week. On 21 October we also look forward to a special day with the Sweet Waters Project from Bath Spa University – an audio experience - thinking about the historic impact of the slave trade on the area. As ever entrance is free. We are very happy to host more GROUP VISITS on other days by arrangement. Our volunteers will be closing the mill to the public at the end of October and lifting our displays and artefacts – hopefully above the level of any winter flooding!

As well as guiding visitors on open days and for Group Visits, Saltford Brass Mill Project volunteers meet through the year to care for the mill and garden and develop new ways to interpret it for visitors. We are delighted to continue liaison with several projects establishing walking routes and raising historical and cultural awareness in the Avon valley.

Saltford Brass Mill was in use from the 1720s until 1925 for the manufacture of "hollow ware" (brass pans, vats and kettles) and brass sheet. There

were four waterwheels and four annealing furnaces. The remaining waterwheel is made of iron and survived because it was adapted to drive a dynamo to provide electric light for a squash court built in the mill in the late 1920s. The single standing annealing furnace structure survived as a wine cellar in the 1930s and is unique in the region, and probably in Europe.

If you haven't seen our replica hammer and turntable in operation – and our enhanced lighting of several previously gloomy areas or our new water-power models - why not drop in? The team is always looking for NEW MEMBERS in all sorts of roles, so if you are interested in our local industrial heritage and sharing knowledge in the community, do get in touch. Visit www.brassmill.com

SALTORD DISTRICT GUIDES

Saltford District Guiding is Thriving!



Rainbows, Brownies, Guides, Senior Section and their leaders have had more opportunity than ever in the past year to try new activities and learn new skills. In June girls from all units were invited to take part in the first Saltford District Camp for a number of years. With Guides sleeping under canvas and Brownies tucked up inside girls enjoyed an action packed weekend away at Briarlands in Upton Cheyney. On the menu of activities was fencing, archery, orienteering, slip and slide, a giant inflatable assault course, go karting and grass sledging. Once the sun was setting girls enjoyed songs and treats around a large campfire. Rainbows, our youngest members, joined for the day to get a taste of all the activities too. All girls gained an exclusive badge and t-shirt, with Guides also earning their "Camper" badge. A special thank you goes to Saltford District Commissioner, Catherine

Banfield, for arranging such an action packed weekend for all.



Earlier in the year girls from Brownies and Guides were able to join forces to learn circus skills, thanks to Mindblowers Bristol. Girls had the opportunity to learn the unicycle, diabolo, plate spinning, juggling and even had a go at making human pyramids! Girls who took part in this event earned



In the winter we were met with the dreaded news that our faithful heating had failed us at the Saltford District Headquarters. Faced with the prospect of a long, cold winter of evening meetings the girls and their leaders rallied around to fundraise by taking part in a sponsored walk from Saltford to Bath, with the welcome reward of a play in Victoria Park at the end. Thanks to this fundraising event, a donation from Saltford Parish Council, and the excellent work of a local company, AC Martin, Saltford HQ was warm again within weeks and now boasts a brand new gas central heating system.

The new school years sees the expansion of Guiding in Saltford with the opening of a brand new Rainbow unit to meet the growing demand for girls aged 5-7 years to get involved. Girls from all units have another action packed year ahead of them in 2017/18 with a Thanksgiving themed weekend away booked for November, a Science skills day thanks to E-on energy in January and a World Thinking Day celebration event in February! In the

summer the Guides are looking forward to a great canal adventure, navigating their own canal boat along the Kennet and Avon Canal, and Girlguidings annual festival style camp, Wellies and Wristbands in August.

If you think you can keep up with the pace of Guiding in Saltford or would like your daughter to get involved please get in touch either via email: saltforddistrictguides@gmail.com or online: <https://www.girlguiding.org.uk/get-involved>

SALTORD FOOTBALL CLUB

As I write this the new season is only just starting and hence there is not much football action to report on. Our First team gained promotion last season and now play in Division 1 East of the Somerset County League. After 5 league matches so far this season they are in third place on goal difference – a creditable performance which bodes well for the season and if it can be carried through will be an excellent result. Unfortunately their performance in the Somerset Senior Cup was not so successful and they went out in the first round – although it was against the run of play! The adult Reserve team have only played one match which they won so early days but fingers crossed. At the date of writing none of our other teams have played in anger but I wish them all well for the season.

With the start of the new season we also have a new arrangement for pitch marking. This season we are working much closer with the Sports Club who now look after the pitch marking and minor ground maintenance tasks. I have to say that although we have only played limited home matches I have been very pleased with the state of the pitches and have heard favourable comments from others. There are other changes being investigated which should lead to further improvements and I look forward to working with the Sports Club to deliver these improvements.

Hopefully by the time you read this, and with the very generous help of local business, there will have been a complete refurbishment of the old changing rooms inside and out. Work did stall for a while due to several reasons not helped by us deciding to change plans midstream! When finished

we should have some excellent facilities which will provide us with suitable changing rooms, storage, and a referees room. In addition it will mean that for the first time we will have changing rooms that meet the county standard for a women's team, so if anyone is interested in either starting or relocating such a team we would be pleased to hear from you. Hopefully we can get some before and after pictures into the next issue of SCAN.

We are always on the lookout for new coaches (we will pay for training) and other helpers, either to support the individual teams, the club as a whole, or to help prepare the pitch on match days. We are also on the lookout for new players. We are a friendly club and try to make everyone welcome and at ease. If you are interested in becoming involved in the club please feel free to get in contact and we are sure we can find you a rewarding position in the Saltford FC team.

As always if you are able to offer assistance, advice, sponsorship or even if you just want to find more details please visit the website, where results and fixtures can be found, or contact Phil or Nic Saunder on 01225 872541.

DEMENTIA FRIENDLY KEYNSHAM

Our monthly meeting in September was our 5th and the Music for the Mind session continues to be very popular. We were very pleased from the feedback we received from those who attended the session. We have been averaging between 7 and 9 people with dementia at each session plus their carers.

There is plenty of room so we're hoping to increase our numbers. After refreshments and biscuits, Lindy leads the session that includes easy exercises and plenty of singing that includes songs old and new.

Through popular demand we're pleased to say that we now have the funding available to run the sessions twice a month starting in October. It will run on the 2nd and 4th Thursdays of the month in St Dunstan's church hall in Keynsham. The dates between now and Christmas are Thursday 12th and 26th October, Thursday 9th and 23rd November and Thursday 14th December.

Anyone living with dementia can come along to our meetings with their carers. It is a fun event to be enjoyed by everyone. There is no need to book, just turn up on the day. There is no charge but any donations would be welcome. There is plenty of parking at the rear of the church so do come along and give it a try. You will be sure of a warm welcome.

We have a craft stall at the Saltford Christmas Market on Saturday December 2nd from 10-2pm to raise funds for our group. Please come along and buy some of our festive goodies and find out more about what we do

For more information you can go to our website at www.keynshamdaa.webs.com or e-mail us at dementiafriendlykeynsham@gmail.com or call us on 01179837923.

SALTORD SANTA DASH

The fifth Saltford Santa Dash will run on Sunday



3rd December and registration is now open for both the 5 mile fun run and the mini santa dash. Entry forms are available for both events on the website www.saltfordsantadash.webs.com.

This local community event attracts some five hundred runners and about four hundred younger mini santas together with their friends and families. The event is also wonderfully supported by local business sponsorship. Without this the event would not have achieved such success.

Richard Evans Chair of the event's organising group said "In addition to the fun associated with Santa Dash I am pleased that we have been able to raise funds for local charities. Last year we raised over £10,000 for the Butterflies Haven Charity which supports youngsters and families living with autism. This year we have chosen another local and extremely worthy charity Jessie May.

This charity provides specialist nursing care for terminally ill children in their own homes. So I do hope that people will come out and support us just as they have for the last four years”.

STOTHERT & PITT BOWLS CLUB

You know that latest thing about walking being good for your health? Are you?? Should you? Here's your answer, join our bowls club! You not only walk a lot, on the flat, up and down. You also push quite heavy bowls up the green which is excellent cardiovascular work; AND... big bonus ... you make friends, have fun and sometimes even win!!! How many bonuses is that?

We are moving towards the end of the outdoor bowling season which is very sad. However results have been good this season. The men's A team have maintained their place in the top division, the ladies have slumped a bit but are now picking up, all teams have fulfilled all matches and we have made HUGE progress finalising the long term lease with Bath Spa University, so lots of ticks in lots of boxes.

We still have a good number of matches to play and of course Finals' Day is coming, when the best play the best and the best person wins!!



Further info from Vicki on 01225 354535

SALTFORD AFTERNOON WI

At July's meeting our guest speaker was Ollie Slym, a fundraiser from Children's Hospice South West. Ollie talked about his background, his involvement with the charity, the necessity for raising money to keep the homes operational and the ways in which money is raised. His talk ended with a short film featuring one family which has greatly benefitted from the care offered. He told us of how the hospice is a mostly happy place

giving much needed support and respite to the whole family. He and his team stayed for tea and cake during the break while we caught up with our news.

Our August meeting started with a talk by Tim Rawlings from BANES Council on the changes happening to our refuse collection service from November 2017. Our members had plenty of questions and comments and we found Tim's talk most useful. August is traditionally a meeting where our members take the floor with Show & Tell. It's lovely to share memories and experiences from our friends and colleagues and this year we heard about a special baby blanket made for a first grandchild from the family's own cashmere jumpers, a book passed down through the family containing hand-painted water colour pictures of plants and flowers, effective household cleaning products, a beautiful quilt started at a workshop in California, examples of wonderfully intricate lace being woven by a member, a cross stitch family tree embroidered by a close friend and a trip to the Farne Islands. Refreshment was a fresh cream tea made and served by SAWI committee members. A very busy meeting.

Other activities in July and August were a trip to the Lavender Farm in Faulkland, a summer picnic in the garden of a member where we enjoyed a wonderful selection of food provided by those attending, a walk to Kelston Cheese shop and meetings of the discussion group and the book clubs.

KEYNSHAM & DISTRICT LIONS CLUB

After the storm comes the lull goes the saying, and this is ringing true for us Lions at the moment although plenty is going on in the background with the planning of activities up ahead.

Just to follow up though on our Duck Race, mentioned in the last edition of SCAN. this all went according to expectations.

The Music Festival was blessed with a lovely sunny day and the public turned out with their picnics and to cheer their ducks as they 'swam' down the river, everyone had a lovely time and helped swell our Charity funds.

One other memorable event was Keynsham & District Lions Club playing host once again this year, on Wednesday 19th July, at Saltford Hall, providing a BBQ with fun and games for children from the Chernobyl nuclear disaster area in Belarus, together with their UK host families plus of course the Lions, who also paid for clothes for all of the visiting children whilst they were here.

It was so obvious that everyone present had a really enjoyable evening and the camaraderie amongst the Lions throughout the whole of the activities certainly shone through and when the children sang their own song of thanks to the Lions, there were very few dry eyes in the room.



These children are so well mannered and show so much appreciation of all that is being done

for them. It was in 1986 that the Chernobyl nuclear disaster occurred and yet children in that area of Belarus continue to be affected and in 1992 the Chernobyl Children's Life Line was established in the UK and the Bristol Link brings 16 children aged around 11 years to the UK each summer for a 4 week holiday to the UK.

These children live in desperate poverty in houses such as shown in the photograph, where outside toilets are a reality and with just a single central heated oven to keep the whole family warm in the winter where temperatures can drop to -30 degrees.

The children play and learn as children in the UK, but their health and economic prospects are among the lowest in the world and it is reckoned that a 4 week trip to the UK can add considerably to their life expectancy.

So, following our few months of activity we are having a wee bit of a rest but nevertheless sched-

ules are in the process of being drawn up for our next big fund raising event....

The Lions Illuminated Christmas Sleigh with of course, Father Christmas on board ! So watch the local press and SCAN for scheduled dates.

The usual sleigh outings will travel around the streets of Keynsham and Saltford plus a few static occasions at various Supermarket locations in our area.

As well as being an excellent fund raising event, providing the funds which enable us to carry on supporting many special needs and good causes in our community, we believe our public, especially the children, always look forward every year to our 'parade'.

Before that event arrives however, we are once again entertaining the 'Contact the Elderly' group with afternoon tea on December 10th at Saltford Hall and we very much look forward to that occasion.

If anyone would like to learn more about the work of the Lions , or how to become a member, please visit

www.keynshamlions.org.uk or Telephone 0845 8339817 Email info@keynshamlions.org.uk

SALTORD ENVIRONMENT GROUP

WAKE UP & SMELL THE COFFEE! CHATHAM HOUSE REPORT ON FOOD SECURITY

The following is from the Chatham House Report "Chokepoints and Vulnerabilities in Global Food Trade" (Rob Bailey and Laura Wellesley, June 2017):-

"Global food security rests upon international trade in a handful of crops. Maize, wheat, rice and soybean together provide around two-thirds of the world's harvested crop calories. While production of these crops is concentrated in a few 'breadbasket' regions, demand is ubiquitous and reliance on imports is rising."

"Population growth, shifting dietary preferences and growing demand for biofuels are driving up demand for grain - for food, animal feed and fuel. Global crop production will need to double by 2050 to keep pace with this demand. But a combina-

tion of biophysical and socioeconomic factors - including heat stress, water scarcity, declining soil fertility, soil erosion, intensive cultivation practices and poor nutrient management - is slowing global growth in crop yields. These supply challenges are heightened by the fact that opportunities for the expansion of cropland are limited: agriculture already uses 12 per cent of the world's ice-free land; should this share surpass 15 per cent, we risk triggering abrupt, potentially catastrophic environmental change."

Whilst the report looks at chokepoints, critical junctures on transport routes through which exceptional volumes of trade pass, it also highlights the fact that "climate change is increasing the threat of disruption. It will increase the frequency and severity of extreme weather, leading to more regular closures of chokepoints and greater wear and tear on infrastructure. Rising sea levels will threaten the integrity of port operations and coastal storage infrastructure, and will increase their vulnerability to storm surges. Climate change is expected to aggravate drivers of conflict and instability. It will also lead to more frequent harvest failures, increasing the risk of governments imposing ad hoc export controls."

It is reports like this that remind us of the fundamental importance of protecting our Green Belt from the short term economic gain but long term economic loss of development on land of such increasing value (that is value in its widest sense). Who can accurately predict when reduced food security, food scarcity and rising food prices will start to impact on the nation's social and economic well-being?

Our Green Belt does much more than support our quality of life, so important for good mental health whether we live close by it or gain recreational access to it from our towns and cities. At a more basic level it supports our food security as the rest of the world will struggle to feed itself let alone supply food to meet our needs, currently approximately 40% (net) of the food we in the UK consume (source Defra). It follows that in addition to its current purpose its future role will become ever more important for future generations.

In addition to helping to absorb heavy rainfall

and reducing soil erosion during flash floods (an increasing occurrence as a result of climate change), it would appear from the lack of attention from our politicians that its key role for supporting the UK's food security is still underestimated. Whether Green Belt land itself is or can be used for food production, it has an equally important role of supporting food production on neighbouring farmland that relies on surrounding natural habitats that support pollinating insects and the wider ecosystem necessary for a healthy environment that sustains all life forms.

It is that important ecological purpose of supporting food security in an uncertain future that organisations like SEG need to communicate as the dangers posed by climate change to our food security become ever more apparent.

FOOTNOTE

Chatham House (www.chathamhouse.org), the Royal Institute of International Affairs, is an independent policy institute based in London. It's mission is to help build a sustainably secure, prosperous and just world.

Phil Harding, Chairman, Saltford Environment Group

www.saltfordenvironmentgroup.org.uk

SALTFORD BEAT SURGERIES

All at the LITTLE COFFEE SHOP. BATH RD/MANOR ROAD JUNCTION

TUESDAY 17TH OCTOBER time 9-10

FRIDAY 17th NOVEMBER time 9-10

MONDAY 18TH DECEMBER time 9-10

This is an opportunity for anyone to come along and speak with a member of the local beat team, with any concern or issues they may have, or even just for a chat.

FRIENDS OF SALTFORD LIBRARY

On Saturday 14th October it will be National Libraries week and at 11am we will be reading Hairy McClary to children. There will be colouring sheets too to share so we look forward to seeing you.

SALTFORD FAIRTRADE GROUP

Saltford is very proud of being a Fairtrade Village; this means that the Parish Council and local businesses and organisations in Saltford have undertaken to use Fairtrade products. Buying Fair Trade goods is a practical way to help the world's poorest producers to earn a fair price, lifting them and their communities out of desperate poverty.

However, it is not easy to buy locally from the huge range of foodstuffs, household goods, crafts, gifts, cards and much else which is available. One way for Saltford people to support Fairtrade is by on-line shopping at traidcraftshop.co.uk (not a spelling mistake!). Christmas is an excellent time to look at what they have to offer with a good selection of cards, gifts and Christmas goodies.

Orders over £40 are delivered free but if you would like to buy a few items I can send off a joint order and avoid the delivery charge. (You can also ask for catalogues with your order.) I plan to send a regular order on the last Thursday in each month

which will be delivered early the following week, for you to collect from my home or I can drop your order off for you. Money with order preferred.

If you would like more information email me at kath.mccarthy@hotmail.co.uk or ring 01225 344066.

Do come along and have a chat with us at the Christmas Fair on December 2nd where we will have a range of Traidcraft Christmas goodies to buy and samples to

(Charity no.1043886)

Saltford Village Choir

We have just started rehearsals for our Christmas Concert called "Sounds of Christmas" which will take place on Saturday 9th December.

We would like to welcome some more people to the choir. We meet on Tuesday evenings in the Wansdyke room at 7.30pm. There is no audition and you do not have to be able to read music. Our reasonable subscription pays for our sheet music and our musical director. Being a sectional member of the SCA means our room hire is gratis.

Please come along and try us out. If more details are needed ring Julie on 01225 872336



Join the Saltford Scrabble Club!

The long standing Saltford Scrabble Club now meets every Monday afternoon 2-4pm in Saltford Hall.

Members ability ranges from beginners to very good. We usually play two games, with two different partners, and a break for a cup of tea and a biscuit half way through the afternoon. We play for fun, not to win competitions! It helps to keep our brains and memories ticking over.

We would welcome new members of any ability to come and join us. We each pay £2 per afternoon.

Would anyone like to come and experiment with the games Upwords and Rummikub?

Contact Cynthia Wilson 01225 874259

REFURBISHMENT OF SALTORD HALL CONTINUES APACE

Over the 7 years to the end of January 2017 we have spent an amazing £147,000 on maintenance and improvements at Saltford Hall. Now in just the last 6 months we have spent a further £47,000. Most of this spend has largely gone unseen, but this year's improvements have been far more visible.

As all visitors and users of the Hall will have seen, the huge improvement this year has been the complete refurbishment of the foyer area and you can see a few pictures below. We are hugely grateful to Saltford resident Clive Shipley for all his time in project managing this refurbishment, which will be completed in the next few weeks with the spray painting of the doors.



Having really liked the colour scheme in the foyer and needing to refurbish the adjoining Avon Room, volunteers spent the summer giving this room a complete make over. Not only have the walls and doors been painted in complementary colours to the foyer, but we have completely replaced the ceiling lighting with new energy efficient LED panels and introduced brand new Roman blinds made by local resident Andrea Phillpotts.



So what's next? The separate Wansdyke Building was erected in 1983 and apart from a lick of paint a few years ago is now sadly in need of a major refurbishment. Having spent so much of our own fundraising on the foyer and Avon Room refurbishments, our own funds are running low, so we are currently applying for multiple grants to fund all new toilets, complete replacement of all windows with double glazed UPVC, replacement of the suspended ceiling in the main room and the refurbishment of the kitchen. We are also investigating the installation of "air to air" heating. This work will be undertaken in a couple of phases, starting with the toilet and windows by the end of November 2017.

This work has all been possible through the excellent community support for all our various fundraising events, cafes and bars, without which this would not have been possible. A huge thank you and keep on coming!

OTHER NEWS

Can you help?

Books on the Wall and Books in the Hall is an initiative that helps to raise much needed funding for developments in Saltford Hall. As you all know Saltford Community Association provides continually updated facilities for a wealth of varied activities for the local and the wider population.

Fund raising has a high profile in the SCA with a variety of markets, quizzes, social events, film showings all backed by the amazing Saltford catering team. ***Books on the Wall***, outside no 24 High Street, contributes over £2000 a year to funds. In addition ***Books in the Hall***, with books also selling at 50p, are providing a healthy income. The setting for this part of the business is in the warmth and comfort of the beautiful



blue Foyer of Saltford Hall. We now need help to grow this branch of the popular book selling initiative. I need someone or two people willing to receive, sort, display, eject and refresh the amazing collection of books constantly on offer. Storage space is available.



If you feel that this is for you then please get in touch:

Jill Williams:

01225 872489

saltfordevents@hotmail.co.uk

Think of the perks - you will have the first browse through, elegant gardening books, sumptuous cookery books, novels you might easily pass over, and a host of genres previously untried. All you need to be is passionate about books with a little time to spare. I wait to hear from you
Jill



**Join us for the Keynsham & District Talking
Newspaper Christmas recording**

Saturday 11th November, 2pm

Followed by mince pies and tea or coffee

The Keynsham & District Talking Newspaper for the Blind and Partially Sighted is recording its Christmas edition on Saturday 11th November at St Dunstan's Church at Bristol Road in Keynsham.

We invite you to join us at the recording session from 2pm.

There will be a mixture of well-loved carols and readings, followed by tea, coffee and mince pies in the church hall. There is parking on site.

Whether you are a volunteer, listener or other supporter, you would be most welcome to join us.

Please put the date in your diary and if you have any queries, contact the KTN secretary, Catherine Dhanjal on tel: 0800 998 7990 or 0794 166 9925 or email catherine.dhanjal@theansweruk.com



**Saltford Brass
Mill Project**

**Are you interested in
our social and
industrial heritage?**

**We are seeking volunteers to join our
team in a variety of roles to help
preserve and present this unique
example of Saltford's past.**

**Please call us on 01225 317277 – email
secretary@brassmill.com or visit
www.brassmill.com for more information**



SALT FORD BUILDING SERVICES



SALT FORD PLUMBING SERVICES

Specialists in:

**EXTENSIONS
LOFT CONVERSIONS
REFURBISHMENT**

- ✓ Design Services
- ✓ Loft Conversions
- ✓ Refurbishments

- ✓ Bathrooms
- ✓ Kitchens
- ✓ Landscaping

**NEW BOILERS
UNDERFLOOR HEATING
FULL HEATING SYSTEMS**

- ✓ New Boiler Specialists
- ✓ Underfloor Heating
- ✓ Full Heating Systems

01225 874676

info@saltfordbuildingservices.com

07971 169 878

saltfordbuildingservices.com

Find us on





Whittock Consulting Limited

Chartered Management Accountants

Effective local accountancy and bookkeeping services including:

- Bookkeeping
- Management accounts (monthly or quarterly)
- VAT returns
- Outsourced finance team
- Cashflow management and improvement
- Budgeting & forecasting
- Finance Director services
- Company Secretarial services

474B Bath Road, Saltford, Bristol, BS31 2DJ

Phone: 01225 585756

Web: www.whittockconsulting.co.uk

Email: info@whittockconsulting.co.uk



Julie Collins

CITY & GUILDS QUALIFIED
BEAUTY THERAPIST

- ✓ Manicure & Pedicure
- ✓ Waxing Treatments
- ✓ Eyebrow Shape, Eyelash & Eyebrow Tint
- ✓ Massage, Facials, Aromatherapy

call **07799 041762** email: juliemcollins@hotmail.co.uk

1Stop PC Solutions —
Satisfaction guaranteed

PC repairs
maintenance
upgrades

For a friendly, fully confidential and
professional PC service in your own home at
a time to suit you

www.1stoppcsolutions.co.uk

Phone Ian on 0117 909 0496 or 07792 907618

PETE'S HANDYMAN SERVICES

Painting, Paperhanging, Ceramic Tiling,
Laminate Floors,
Door Hanging(internal), Shelving,
Curtain Rails and Blinds fitted,
Flatpack Assembly
& much more plus

Garden Maintenance

Patio Pressure Wash, Fence painting,
Lawn Mowing, Strimming,
General Garden Tidying.

*....and all those little jobs you don't
fancy DIY ing!!*

For Quality Work
at Reasonable Prices

**Call: Pete on 0117-9613900 or
Mobile: 079 444 84 784**

SBN SALT FORD
BUSINESS NETWORK

Promoting and supporting new and existing
Saltford Businesses.

Regular seminars and social meetings, web
directory and email updates.

Membership open to business people
based, active or residing in Saltford.

www.SaltfordBusinessNetwork.org.uk

ANDREW BENTLEY



PAINTER & DECORATOR

QUALITY WORK ASSURED

SALT FORD BASED

RING 01225 872843

A decorative border of green holly leaves with red berries surrounds the text.

Christmas Market

**Saturday 2nd December
2017**

Saltford Hall

10 am to 3 pm

Stalls with -

Crafts, Preserves, Toys, Cakes, Books, Bric a
Brac, and lots more.

Santa's Grotto

and relax with a glass of mulled wine
and a warm mince pie or
a delicious freshly cooked bacon roll in our

Cafe.

To book a stall contact Steve on 01225 400155 or
email steveseeley@blueyonder.co.uk



Give a Christmas gift to a needy child

Enjoy filling a shoe box

Get your "How to Pack a Shoebox" leaflet from:-

St Mary's Church
Saltford Marina
The Bird in Hand
Saltford Hall

Drop off your shoebox 1 - 18 November 2017

Local co-ordinator Lynn Pickup tel 07771 598124

Operation Christmas Child distributes Christmas gift Shoeboxes to disadvantaged children around the world.

Please help by packing a Shoebox with goodies
Join Saltford's efforts to spread joy at Christmas with this simple, unconditional gift.

Visit our web site, just google - Operation Christmas Child

Modern Jive
New Year's Eve - Hollywood Glamour Ball
31st December 2017 8pm - 1am

Saltford Hall
Wedmore Rd, Saltford, Bristol BS31 3BY

Tickets £12
includes nibbles
and a late night
snack with tea or coffee,
(B.Y.O. Alcoholic Drinks)

YOUNG LIVES vs CANCER
CLIC SARGENT Tickets on sale from October 7th at
CLIC Sargent Charity Shop 5 Bath Hill Keynsham Bristol BS31 1EB,
on line with PayPal, through T-Jive Facebook page or by emailing
sue-halliday@hotmail.com or Tel. 07979740702

This is a T-Jive Promotion



TLC
Pet Care Services

I can come to you...or
bring your pets to me
for TLC

- Pet Care Visits
- Dog In-Home Boarding
- Dog Walking
- Pet Feeding
- Small Pet Home Boarding
- Pet Taxi Service
- tlcpetcareservices@hotmail.com
- Katy- 07814 053103
- TLC Pet Care Services Bristol

ENGLISH / MATHS SPECIALIST TUTOR

For anyone struggling with
conventional / mainstream methods
Individual support from Dyslexia
trained teacher.

All ages /levels
Sandra Jones B Sc. AMBDA. Dip
(Teaching)



Platinum *Wedding Anniversary*



*Saltford Community Association offer sincere Congratulations to
Gordon and Olwyn Smith, long term residents of Beech Road who
were married in Newport seventy years ago, on Fifth August 1947.
At the time Olwyn's address was in Newport and Gordon's was listed
as Aircraft Carrier Indefatigable.*

70

70

**ANTIQUES &
COLLECTORS FAIRS**
SUNDAY 24 SEPTEMBER
SUNDAY 29 OCTOBER

10am - 3pm

SALTFORD HALL BS31 3BY

**REFRESHMENTS AVAILABLE VIA SCA COMMUNITY
CAFE**

ADMISSION £1

Ring Mark on 07835 300965 for a table



What: Charity Quiz Night

All profits to Age UK

When: 28th October 2017

7.00pm

Where: Saltford Hall Wedmore Road Saltford BS31 3BY

**How to book: Phone 01225 873296 or
email keynshamtangent@gmail.com**

How much: Teams of 4 to 8

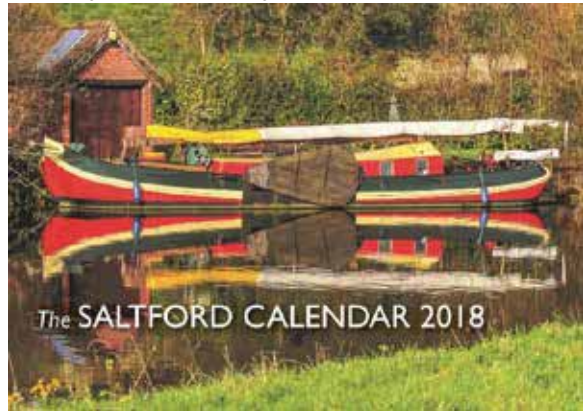
£5 per person (including nibbles)

Pay Bar Available all evening

The Saltford Calendar 2018

"The Saltford Calendar 2018" featuring some stunning photographs submitted to the photographic competition for the Saltford Festival 2017 is now available to purchase from SCA. At just £6 each you can get your calendar(s) from Saltford Post Office, the SCA office at Saltford Hall any morning Monday to Friday. Alternatively email events@saltfordhall.co.uk

The production of an annual Saltford Calendar is a joint SCA/SEG initiative. Net proceeds will be split between SCA and SEG to help further their voluntary work supporting our local community.



Saltford Surgery



4788 Bath Road,
Saltford,
BS31 3DJ

Tel: 01225 872002
Email: saltford@bathvetgroup.co.uk

Website:
bathvetgroup.co.uk

EMERGENCIES
01225 832521



Find the hidden gem for YOUR pets in Saltford...

- Weekday appointments available between 9am and 6.30pm
- 24-hour hospital and emergency service in Bath
- Great Pet Health Club available
- RCVS Small Animal Accredited Practice

Saltford Community Association



Would you like some
company for

SUNDAY AFTERNOON TEA



Sunday's can be the worst day of the week if you are on your own. So if you would like some company and a good old chat, why not come along to the Avon Room at Saltford Hall and share a 'cuppa and cake' on:

Every First Sunday in 2017
2PM TO 4PM

For more information ring Julia Chandler on 0117 9837825

**WE'LL RECOMMEND
A GARAGE DOOR
SOLUTION THAT
SUITS YOU, NOT US**



That means we listen to your **needs**, take on board your **wants** and, very importantly, take into account your **budget**. We can then advise you on the best way to go; whether that be a top of the range automated door, a basic up and over or simply a repair.

So with direct access to the top manufacturers, a huge stock of spare parts for all makes and our own teams of experienced engineers, you can be assured of the result you want.

TRADING STANDARDS APPROVED TRADER



SDS
Secure Door Services

To discuss your requirements call
Debbie or Tracey on **01225 729009**
Showroom: Radstock Road,
Midsomer Norton, BA3 2AD
www.sdsgaragedoors.co.uk

For details of our pre-fab buildings
visit: www.sdsconcretegarages.co.uk

**Advertise your business
in colour here from**

£36.75

Contact

Tina Easterford

01225 872274

scan@saltfordhall.co.uk

Saltford Benefit Help

Do you need help :-

- ❑ Filling in claim forms for benefits
- ❑ Identifying benefits/grants that you may be entitled to
- ❑ Reacting to mandatory reconsiderations & appeals for benefits you already receive

Then why not come along and see Anna for free on **second Tuesday of each month** at Saltford Hall from 10 – 12 ie 10 October, 14 November & 12 December 2017.

You must ring the Office (01225 874081) in advance to book a meeting.

Anna is a Mum of two children with additional needs, and has plenty of experience in dealing with benefits, both as a mum and through working for the Department for Work & Pensions. She will offer you friendly help based on her own experiences/knowledge.



Saltford Talks

Following the success of the lunchtime talks during the Festival we thought we would try a couple of evening talks at Saltford Hall before Christmas to see how popular they might be. Each evening will start at 7.30pm with bar open 6.45pm

3 November – a double bill about Saltford :-

Hilary Smedley – “Visits to interesting places in Saltford”

Chris Warren – “A surprising history of Saltford Station as it found itself at the sharp end of the Industrial Revolution”

28 November – Chris Green, a Saltford resident, will give a talk based on his book “SPIN ZHIRA: Old Man in Helmand. A true story of love, service and incompetence”

Just £2 on the door and as well as the bar, tea/coffee will be available.

The Saltford Business Network promotes and supports businesses in Saltford. We offer access to local and regional information and organisations and the chance to share ideas with local colleagues. And we seek to ensure that the views of Saltford businesses are represented when plans are made and decisions taken.



Our membership ranges from management consultants to glaziers, farmers to trainers and caterers to foresters. New members will always be welcome, all you need to be is a business person residing, or actively engaged in business in Saltford. We'll include your business in our on-line directory.

Saltford Business Network continues to develop links with business organisations in the region, so keeping our members informed of local and regional issues. Our programme for the remaining months of 2017 continues, with the usual blend of informal social gatherings and informative seminars and events. For example we plan a seminar on "Pensions in plain English" given by a member in October and hope to get together for a curry to warm us up for the winter in November.

Check our web-site for details of our future events. You will also find our Business Directory, other blogs, useful links and new posts, as well as how to contact us:

www.saltfordbusinessnetwork.org.uk

SALT福德 COMMUNITY CINEMA

FRIDAY 20 OCTOBER

VICEROY'S HOUSE

FRIDAY 24 NOVEMBER

THEIR FINEST

DOORS OPEN 6.45PM AT SALT福德 HALL

**FULLY LICENSED BAR AVAILABLE
TOGETHER WITH ICE CREAM**

TICKETS JUST £5 ON THE DOOR



Keynsham Rotary Club
Proudly Present our

ANNUAL HARVEST SUPPER & HARVEST AUCTION

SATURDAY OCTOBER 14th

7 pm

Compton Dando Village Hall

Court Hill Rd, Compton Dando BS39 4JZ



Tickets £8.00

BYO Drinks and Glasses

Contact John Pike. johnspike@sky.com

Tel 01179775148 or 07966255489



All monies raised go toward our International Fund & Bujagali Trust

Someone's
gonna die...

Murder Ballad

Produced by
SCARFETH
Mission
Theatre



12-14 October 2017, 8pm at The Mission Theatre, 32 Corn Street, Bath, BA1 1UF

FINANCE: LUCAS (composites) and the Arts: 1810 Bay Office, Abbey Gardens, Abbey Churchyard, Bath, BA1 1UF

Tel: 01225 40392 Email: johnspike@sky.com Web: www.missiontheatre.co.uk

The theatre is a charity and all proceeds go to the charity. No advertising or promotional material is to be used without the permission of the theatre.

All advertising and promotional material is to be supplied by 100% local.



APPLAUSE
digital media

**logo and stationery design,
leaflets, adverts, brochures,
website design & hosting,
email marketing,
presentation media
large format display graphics
3D visualisation**

0117 321 1899
APPLAUSE.CO.UK

Don't get hung out to dry...



**For Professional, Unbeatable
Carpet, Rug & Upholstery
cleaning, contact:**

Jon Gardner 01225 729060



GRIMEBUSTERS

www.grimebusters.uk

Saltford Computer Café

Want to improve your knowledge of your PC, laptop, tablet or phone? Want help with emails, WORD documents, internet browsing, Skype etc?

Then come on down with your device to our next café sessions on **Monday 9 October** and **Monday 13 November 2017** at Saltford Hall from 10 - 12



Volunteers on hand to help with your computer needs. Each session will be £4 and will including unlimited tea/coffee and biscuits!



"BIRD IN HAND"



High Street Saltford Bristol

Tel: (01225)873335

www.birdinhandsaltford.co.uk

OPEN ALL DAY from 11am till 11pm

Lunches 11 - 2.30pm (Sunday until 3.30pm) Dinner 5.30 - 9pm

FOOD SERVED "ALL DAY" SATURDAYS & SUNDAYS

DAILY LUNCH SPECIAL: Monday – Friday 2-courses £9.95

EARLY EVENING SPECIAL: 2-Courses £9.95 Monday – Thursday 5.30-6.30pm

***Chef's Italian Night :
Tuesday 31st October***

Please book early to avoid disappointment!

Pop in for your daily cup of our freshly brewed Coffee with a Bacon Roll - £3.50

iTeam Solutions

IT Support for small and mid-sized companies



- Dedicated helpdesk
- Business IT expertise
- Known monthly support costs

Microsoft Partner

Silver Small and Midmarket Cloud Solutions

Unit4, The Old Mill, Mead Lane, Saltford, Bristol BS31 3ER
www.iteam.co.uk - info@iteam.co.uk - 0117 944 4949

Greener Life Homes

Making Homes Beautiful Inside and Outside

Painting & Decorating
Ceramic Tiling & Finishing Touches
Property Maintenance, Roof Repairs & Rendering
Renovations & Plastering
Garden Building Projects & Home Improvements
Allergy approved Eco Paints available

Contact Jason on 07795 143906
greener-life@hotmail.com

SIMPLY-saab.com



FULL SERVICE FACILITIES INCL
TECH-2 & 9-5 SECURITY

DIGITAL FOUR WHEEL ALIGNMENT
& MOT FACILITIES

AIR CONDITIONING SERVICES INCL
THE LATEST R1234YF GAS

FREE COURTESY CARS FOR ALL
SERVICEWORK *

10,000 SQUARE FEET OF NEW, USED
AND RECONDITIONED PARTS

ELV REGISTERED FOR ALL YOUR
SAAB RECYCLING

A GOOD RANGE OF LATE SAABS
ALWAYS AVAILABLE

Friendly and Highly Knowledgeable Staff

Service 0117 940 6121

Parts 0117 940 6151

Sales 0117 907 4298

Fax 0117 904 4469

Email: saabs@simply-saab.co.uk www.simply-saab.com

*subject to availability

9 CLOTHIER ROAD, BRISLINGTON, BRISTOL, BS4 5PS

Apple Joinery

Manufacturer of Quality Joinery



- Windows
- Staircases
- Doors
- Kitchens
- Conservatories
- All Bespoke Joinery
- U Values & CE Marked

0117 9860062
www.applejoinery.co.uk

Unit 1 & 2 Lays Farm Trading Estate,
Charlton Road, Keynsham,
Bristol, BS31 2SE

sales@applejoinery.co.uk



I. J. WILLIAMS
General Builders & Designers

THINKING OF EXTENDING?

Specialising in house extensions, we are able to assist in organising your design, planning permission and building regulations

Project management from start to finish

We can provide you with a list of clients to contact regarding the quality of our works and/or arrange visits to past projects including my own home which I have extended and renovated to a high specification.

We take pride in always keeping the site clean and tidy and of course are fully insured.

9 Anson Close, Saltford, BS31 3DY

Tel: 07778 297712

E-mail: ianwilliamsbuilders@aol.com

SALT FORD BASED

DAVIES & WAY

CHARTERED SURVEYORS • ESTATE AGENTS

Trusted property professionals.
Serving the community for
over 50 years



- The Salford Home Selling and Letting Specialists
- Your local experts with prominent offices on Bath Road Salford and High Street Keynsham
- An independently partner owned firm staffed by a team of experienced professionals
- A traditional full service estate agency, on line, in print and in office
- Competitive value for money fees with no upfront costs
- Contact Chartered Surveyor Stephen Morris for your free confidential marketing appraisal 01225 400400



Salford 01225 400400

Keynsham 0117 9863681



www.daviesandway.com



Saltford Flowers

By Design

Steph Dunhill

- Bouquets and arrangements for any occasion to suit your personal style, delivered personally to the recipient.
- Corporate designs
- Events - large or small
- Weddings
- A specialist in Funeral and Sympathy flowers
- Free local delivery to Keynsham and Saltford (min £25 spend)

**Call: 01225 872384
07876 346024**

Bath Road, Saltford, Bristol

Email saltfordflowers@gmail.com

www.flowersbydesign-saltford.co.uk



Multi Award-Winning

Newton Farm

Shop - Butchery - Café

Respecting local food and farming



- Emporium for food and drink lovers
- Traditional butchery, specializing in home-produced award-winning meats
- Vibrant café with stunning courtyard serving breakfast, lunch, Sunday roasts and afternoon tea
- Independent wines and spirits, craft beers and artisan cider
- Beautiful gifts and stylish home accessories
- Secure children's play area with keyhole garden
- Innovative events and workshops
- Accessible to all and generous free parking

Opening times. Shop: Mon – Sat 08.30 – 5.30pm / Sun 10am – 4pm. Cafe: Mon – Sat 08.30 – 4.30pm / Sun 10am – 3.30pm

Phone: 01225 873707 Email: info@newtonfarmfoods.co.uk www.newtonfarmfoods.co.uk

Newton Farm Shop, Newton St Loe, Bath BA2 9BT



01225 873 809



info@saltforddental.co.uk



SALTFORD
dental practice



Denplan
At the heart of dental care

Accepting New Patients

- * Long-established Practice
- * Privately-owned, not a corporate chain
- * Ground Floor Surgery
- * Friendly and caring staff
- * Unhurried, personal approach to dental care
- * Family dentistry
- * Emergency appointments
- * Implants
- * Cosmetic dentistry
- * Teeth whitening
- * Ultra-modern facilities
- * Gentle Hygienist



Dr Mark Brown
BDS Dental Surgeon
GDC: 64782



Claire White RDH
Dental Hygienist
GDC 246395

Nervous/anxious patients very welcome

www.saltforddental.co.uk

478 Bath Road, Saltford, Bristol, BS31 3DJ



A FAMILY RUN BUSINESS & PROUD WINNERS OF VAUXHALL'S CUSTOMER EXCELLENCE AWARD 2012-2016

New / Used Cars

Can't see what you want **please ask!** We have access to 1000's of Vauxhall Network Q vehicles

Masterfit / All Makes	Diagnosis / Repairs
Servicing/Parts	Tyres / Alignment
MOT Testing inc.Diesel	Air Conditioning service
Exhaust / Batteries	Courtesy Cars

SALTFORD MOTOR SERVICES, 491 BATH ROAD, SALTFORD, BRISTOL, BS13HQ

EMAIL – sales@saltfordmotors.co.uk

TELEPHONE - 01225873172



VITALITY PILATES

with Vivien

Enjoy the benefits of low impact exercise.

Classes restart 9th September 2017.

Call to book your space now.

Saltford Hall – Fridays 9am



vivienmwaters@gmail.com



07976 409 839



@vitalitypilateswithvivien

Keyford Dancing School

www.keyforddancingschool.co.uk

**BALLET, TAP, JAZZ
STREET JAZZ & HIP HOP**

Pupils from 2 1/2 years old.

Adult Ballet & Tap

RAD & BTDA examinations

Shows & Performances

Classes held in Keynsham & Saltford

Patricia Veale

Fully registered teacher ALCM, RADRTS &

BTDA teaching Dip.

01761 452073

tricia.veale@btopenworld.com

PJ Home Electrical

All Electrical Work

No call out charge

Landlord Certificates

Small jobs welcome



We also Repair

Cookers

& Showers

Based in Saltford



Friendly-reliable-sensible prices

Tel 01172302010 No VAT

Paul 07774747834

D.W.BOWEN

Plumbing & Heating

Gas Safe Registered Installer

Registration No: 95352

2 Montague Road, Saltford

Tel 07778 776568



TRULY SCRUMPTIOUS CATERING

Christenings, Funerals, Parties, Conferences.

Small Weddings, Business Lunches

Delicious food with the personal touch.

Whatever the occasion,

Let us take the strain



Call Carole now on:

Mobile 0775 984 3231

Home 01225 400 130

Email: enquiries@trulyscrumcater.co.uk

www.trulyscrumcater.co.uk



Your rubbish collection is changing from 6 November

Look out for your new wheeled bin or re-usable rubbish bag delivered to your home between 25 September and early November.

What is changing and why?

From 6 November we will be collecting rubbish every other week in wheeled bins or re-usable bags for the majority of residents. Recycling, including food waste will continue to be collected weekly. The chargeable garden waste collections will remain every other week. The changes will help to keep the streets cleaner, increase recycling and make the services more affordable.

What happens next?

From 25 September to early November– we will deliver the wheeled bins/re-usable rubbish bags to 78,000 households. The bins will be delivered to the front edge of your property or your re-usable rubbish bag will be delivered to your door. Please do not put out your new bin/bag for collection until 6 November and continue to put out your rubbish as you normally do until the new collection starts

Your bin/bag will be delivered with a **welcome pack** which will include further information about the new collection service including:

- How to use your new bin/bag collection
- Right day, right week collection calendar for 2017-18 – please check carefully as your collection day may have changed, so it's even more important to make sure your recycling and rubbish is out by **7am**. You can sign up now for text message reminders of when your new collection is due. Text your postcode to 07520 631700
- Details of Christmas and New Year changes
- How to make the most of your recycling collections
- 2 stickers to put on your recycling boxes to help you separate your recycling

Getting ready for the new service

- Please make sure you recycle all you can, including your food waste. You can order extra free recycling containers at www.bathnes.gov.uk/orderacontainer
- Check our website for the latest updates. Check to see if your query is answered in over 30 FAQs we have on our website www.bathnes.gov.uk/recycle
- Visit one of our roadshows to see the new containers and find out more. Go to www.bathnes.gov.uk/roadshows for details and check on our website to find out where our display wheeled bins are.
- Like our Facebook page www.facebook.com/recycleforbathnes to receive updates and tips.



Sign up for our e-newsletter at www.saltfordparishcouncil.gov.uk

Annual Neighbourhood Watch meeting

This year's Neighbourhood Watch meeting will be held on Wednesday 18 October 2017 from 7pm until 8pm at Saltford Hall. All are welcome at this open meeting, hosted by the Parish Council with the neighbourhood policing team – come along and ask the police team questions, hear about crime rates and crime prevention and meet Saltford's Neighbourhood Watch co-ordinators.

Participants at last year's Neighbourhood Watch meeting



Centenary of the end of the First World War

The Parish Council is planning an event in November 2018 to commemorate the centenary of the end of the First World War. Local families could gather to share their mementoes, photos and memories, with a genealogy expert on hand to advise on researching relatives' First World War histories. Please let us have any other ideas for this event.



Mead Lane mooring trial and Traffic Regulation Order

Saltford Parish Council (SPC) unanimously agrees the following policy statements:

- The riverbank at Mead Lane and the adjacent highway are the sole responsibility of B&NES Council.
- SPC wishes the riverbank to be enjoyed by all stakeholders equitably.
- SPC considers an overnight parking ban to be appropriate for the full length of Mead Lane.
- SPC considers that there should be a 14-day mooring limit only if there is effective enforcement of that limit.
- If a 14-day mooring limit is not viable then SPC considers a 48-hour limit to be appropriate.
- If a 48-hour limit is abused or ignored on a regular basis then SPC would wish for a complete ban on moorings in Mead Lane.
- SPC wishes to advise B&NES Council that it fully supports the proposed overnight parking restriction (1am - 8am) in Mead Lane. This is for safety and access reasons (for example to allow access for emergency vehicles to homes and businesses including the Jolly Sailor PH and the Wessex Water Sewerage Treatment Works) and also to maintain Mead Lane as a rural riverside lane overlooking the Cotswold AONB so that it can continue to be enjoyed by a wide variety of recreational users including many visitors from outside the village.

Tricia Golinski, Parish Clerk, Saltford Parish Council Office, Saltford Library, 478a Bath Road, Saltford BS31 3DJ Tel: 01225 873300 clerk@saltfordparishcouncil.gov.uk

For more news, join our 199 subscribers and sign up for our e-newsletter at www.saltfordparishcouncil.gov.uk



MJH Decorators

Friendly, locally based and competitively priced, qualified tradesman.

Internal and external work. For your free estimate or further information contact Matt on:

07831 970930

mjhdecorators@outlook.com

YOGA WITH ANDREA (BWY/EYU) **www.yoga-andrea.com**

Weekly classes at Saltford Hall

Tuesday 18.15h & 20.00h

Thursday 18.15h & 20.00h

Friday 10.00h

Please visit my website or contact me for further information. **Booking is essential.**

Special rates for **one-to-one** classes in Saltford (certain times only).

Andrea Finus

01761 472619 & 07929 520680

andrea@yoga-andrea.com



8 HENRIE STREET
CHIPPING SODRURY
BRISTOL BS37 6DB
TEL: 01454 319 019

52 BAYSTON HILL
BRISTOLTON
BRISTOL BS4 5AB
TEL: 0117 912 0171

EMAIL: advice@jmiinstallations.co.uk

Website: jmiinstallations.co.uk

Look who is in your area?

JMI Bathroom & Kitchen Centre

The one stop Bathroom & Kitchen design through to completion company.



We have just completed another fully fitted bathroom / kitchen to your ideal. We do not do it until you are 100% happy with the result. We are now taking on new building work.

Please contact us for a free no obligation quote or visit us at the above showrooms.



- Mechanical Repairs
- Car Recovery
- Vehicles Servicing
- MOT Testing
- Computer Diagnostics
- Car Sales

Crown Garage is a Saltford based family friendly business that have been repairing and maintaining cars throughout Bristol. We currently have 3 members of staff who hold over 40 years of experience between them

Members of the Good Garage Scheme
www.goodgaragescheme.co.uk

Call Paul or Martin on

01225 873203

WARMLEY JAZZ CLUB

Great trad bands every Wednesday 8pm £4 on the door
WARMLEY COMMUNITY CENTRE

Oct 4

Ron King's Rythm Aces & Jane Vocals

Oct 11

Bob Reynolds' - New Society Jazz Band

Oct 18

Emily Bacon's Good Time Gang

Oct 25

The Panama Jazz Band

Nov 1

John's Jazz Quartet- Tom Doughty Trumpet

Nov 8

Pamela's All Stars

Nov 15

The 4 Sinnermen with Sinead McCabe

Nov 22

Tim Newman's Celebration Jazz Band

Nov 29

To be confirmed

www.warmleyjazz.co.uk

CLARKSON'S INDEPENDENT FUNERAL DIRECTORS LTD

489B Bath Road, Saltford

01225 873535

"A truly personal and caring service"

contact@clarksonsfuneraldirectors.com

www.clarksonsfuneraldirectors.co.uk

Bath branch: 01225 426822

Frome branch: 01373 463888



St. Mary's Church Saltford

Living the story. Telling the story.

www.stmaryssaltford.org.uk

scnbenefice@gmail.com

Tel: 01225 872275

Messy Church- dates for your diary

October 1st - Messy Harvest

November 5th - Remember remember...

December 3rd - Messy Christingle



All start at 4pm and take place in St Mary's Church Hall. A light supper is provided for those who attend. Why not come and join us - all families welcome.

Harvest Services

St Mary's Saltford - 8th October at 9.30am

Holy Trinity Newton St Loe - 8th October at 11.15am.

Messy Play on Mondays,

Our group for children from 0-4 starts continues to meet on Mondays between 9.30-11.30am in St Mary's Church Hall and continues to grow. Thank you to everyone who has donated toys and to all those who have helped with this initiative. Each morning there is play time, story time, craft time, game time and snack time. There is no charge but donations welcome. Its lovely to see so many children and their grown ups enjoying each others company, if you haven't been why not give it a try?

A Service of Wholeness and Healing

On Sunday 15th October at 630pm in St Mary's Church there will be a gentle, service, where the focus is on prayer for wholeness and healing. We don't all go to church , but many people believe in prayer and turn to prayer in times of disappointment, tragedy and sickness. At this service there will be an opportunity to pray those who are in need and to receive prayer, the laying on of hands and anointing with oil ourselves. After the service light refreshments will be available. This service is for everyone, and especially for those who wouldn't normally come to church. Love to see you there and to ask God to bless you and your family.



A Christmas Time to Remember

Our remembrance service for those we love and who have died, recently or in years gone by will be held on November 26th at 6.30pm in St Mary's Church Saltford. We recognise that Christmas is difficult to celebrate when a loved one is no longer with us, and hope that this service will be an encouragement and a comfort to us all.

Memorial Garden

This is now complete, with the exception of some planting, which will take place when the time is right for planting. Thank you to all those who from the community and the church have given time and donations to the creation of the garden.

Please get in touch if you would more information about the events mentioned



Come and use our wonderful room hire facilities for all your groups, events and parties

All rooms have disabled access and wi fi.

A fully licensed bar is available for events/parties. For more details of the facilities on offer, room hire prices or how to book, visit our website at:

www.saltfordhall.co.uk

Alternatively email us at

office@saltfordhall.co.uk or telephone 01225 874081 (mornings only Monday-Friday)



Norman Road, Saltford

We are a warm- hearted bible believing Church and would be pleased to welcome you at any of the following meetings.

SUNDAY SERVICES

11 am - Family Service for all age groups. We believe church should be enjoyed **NOT** endured.

Junior Church (ages 3 upwards) including a variety of bible based crafts & stories.

6.00 pm - Teaching Ministry open for anyone to attend who want a slightly more serious study of the bible.

We believe in what traditional Christianity has always stood for, and our services are informal, friendly, and informative. We do not offer religion, but we present the real Jesus Christ without ritual or money getting in the way. You are our guests and it is an absolute privilege to welcome you to our warm and friendly fellowship. Both services are followed by refreshments.

(Crèche facilities available during both services).

Other weekly meetings include:

MONDAY - FOOD FOR THOUGHT

1st Monday of the month



12:30pm - 1:30pm - Lunch club run by members offering a variety of soups, cakes and fresh coffee or tea, aimed at those retired or any adults (50+) who wish to get out for friendly

conversation over lunch, including a 5 minute thought from the Bible.

TUESDAY - TODDLERS

9.30am - 11.30am - Mums and dads, grandparents and child minders - why not join us for a cup of tea or coffee while your children play in a safe and friendly environment.

WEDNESDAY -

PRAYER MEETING & BIBLE STUDY at 8pm

A more in depth study of the bible and related matters, including vibrant discussion and practical application. We firmly believe that prayer works

and unashamedly pray for our community, family and friends.

FRIDAY - ROCKET KIDZ

6:00-7:00pm

Aimed at 3-9 yr olds, it is a night of fun and games and singing followed by snacks while hearing a Bible story. So come along and start collecting your points for prizes.



Upcoming Festive Events

Sunday 17th December 2017



11am - Family carol service for all ages.

6pm - Carols by Candlelight.

Please join us for our family friendly services, including many of your favourite carols. Followed by refreshments, so please join us after for hot mince pies, cakes and coffee.



CHRISTMAS DAY

Service 10:30

Please come and join us as we thank God for the greatest gift we could ever receive and celebrate the birth of our LORD and Saviour.



Please contact Steve Greedy on 07901601232 or 01225 874520

We do not charge for any of our meetings or activities.

The message of the Gospel is free to all.

www.saltfordcommunitychurch.org.uk

SALTFORD COMMUNITY ASSOCIATION - Affiliated Organisations

1st Saltford Scout Group	Graham Bush	0117 977 1498
Avon Badminton Club	Tony Dicker	0117 330 8510
Avon County Rowing Club	Penny Senior	0117 986 7934
Avon Wildlife Trust	Cynthia Wilson	01225 874259
Bath Guild of Embroiderers	Beryl Calder	0117 956 6945
Bristol Empire Dragons	Tine Curtis	01225 874037
Bristol Friendship Force	Jill Williams	01225 872489
Clover House Therapy Centre	Jill Gill	01225 344047
Craft & Natter Club	Daphne Rahn	01225 873349
Keynsham Dementia Action Alliance	Alan Hale	0117 9837923
Farandole Dance Club	June Simpson	01225 872586
Friends of Saltford Library	Cynthia Wilson	01225 874259
Historical Model Railway Society	Mr Gerry Nichols	0117 973 1862
Keynsham & Chew Valley Rotary Club	Rob Hales	01225 872456
Keynsham & District Dial a Ride	Terry Hopkins	01225 395321
Keynsham & District Tangent Club	Mrs Lis Evans	01225 873296
Keynsham & District Twinning Association	Carole Duckett	0117 986 5350
Keynsham & District Mencap Society	Amanda Leonard	0117 986 5659
Keynsham & Saltford AA Group	Tony Williams	07973 336940
Keynsham & Saltford Local History Society	Richard Dyson	0117 986 4453
Keynsham & Saltford Probus Club	Owen Cole	0117 986 4312
Keynsham & Saltford Wine Circle	Alan Dummott	01225 873493
Keynsham Light Opera Group	Neil Quilter	07979382353
Keynsham Talking Newspaper	Mary Burnard	0117 299 3021
Keynsham Rotary Club	Adrian Dodd	01761 472357
Keynsham Talking Newspaper	Mary Burnard	0117 299 3021
Ladies Together	Doris Davenport	01225 873696
Lions Club of Keynsham	Peter Dando	01225 873917
N.E. Somerset Conservative Assoc	Mrs Margaret Brewer	0117 987 2313
National Auricula & Primula Society	Roger Woods	01455 272 377
Painting for Pleasure	Mrs F. Sheppard	01225 873773
Saltford Afternoon WI	Tina Easterford	01225 872274
Saltford & Keynsham Liberal Democrats	Duncan Hounsell	01225 872870
Saltford Badminton Club	Stella Hurley	01225 872568
Saltford Brass Mill Project	Patrick Beazley	01225 872568
Saltford Business Network	David Hewitt	0117 944 4949
Saltford C.of E, Primary School PTA	Dawn Elliott	01225 872185
Saltford Community Church	Steve Greedy	07901 601232
Saltford Day Centre	Steve Seeley	01225 400155
Saltford District Guiding		saltforddistrictguides@gmail.com
Saltford Evening WI	Vicki Cox	01225354535
Saltford Environment Group	Phil Harding	01225 404258
Saltford Fairtrade Group	Gill Self	01225 872341
Saltford Floral Club		www.saltfordfloralclub.com
Saltford Football Club	Phil Saunder	01225 872541
Saltford Golf Club	Mike Penn	01225 873513
Saltford House Skittles League	Alan Dummott	01225 873493
Saltford Ladies Gardening Club	Mrs Jenni Vickery	0117 986 8331
Saltford Lawn Tennis Club	Kate Lamb	sec.saltfordtennis@gmail.com
Saltford Morning WI	Diana Wiggins	secretarysalmonwi@virginmedia.com
Saltford Orchestra	Carol Mills	01225 837972
Saltford Parish Council	Tricia Golinski, Parish Clerk	01225 873300
Saltford Santa Dash	Lis Evans	01225 873296
Saltford Scrabble Club	Mrs Cynthia Wilson	01225 874259
Saltford Sports Club	David Davies	07768 507009
Saltford Tuesday Morning Badminton Club	Andrea Cooper	01225 872402
Saltford Walkers	Claire Kitchen	0117 9773349
Saltford Whist Club	Malcolm Pearce	01225 872555
Saltford Wind Chamber Group	Liz Harvey	01761 462208
Stothert & Pitt Bowls Club	Vicky Cox	01225 354535
St. Mary's Church	Parish Office	01225 872275
The Filling Station	Ann Blunt	01225 400147
Wednesday Morning Badminton Group	Marian O'Leary	07592 912054



Saltford: 01225 360360
Keynsham: 0117 904 9000

info@eveleighs.com

www.eveleighs.com